

CILINDRI

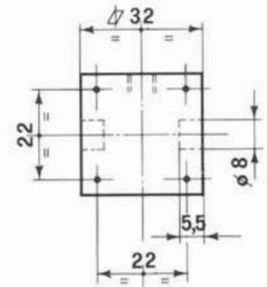
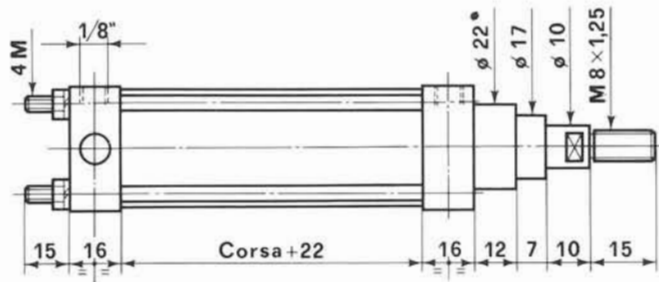
PNEUMATICI

Serie **NR**

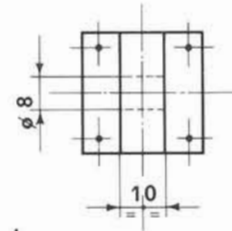


TIPO

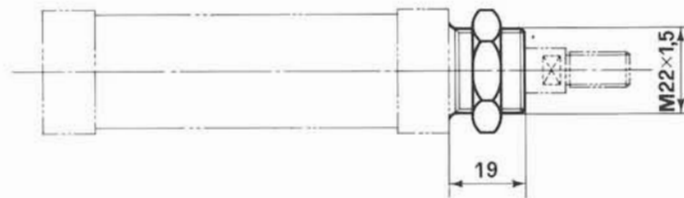
NR 21



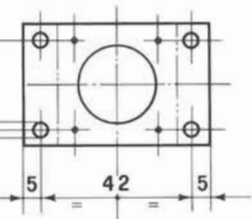
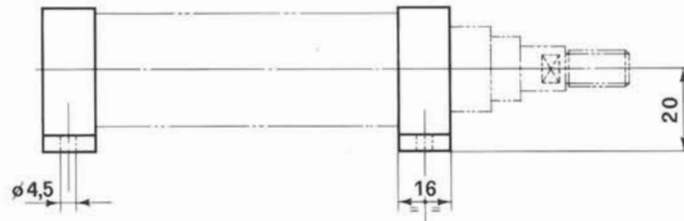
NR 21S



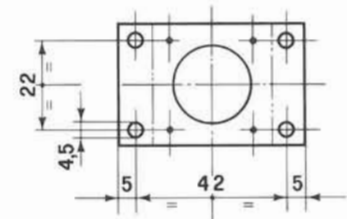
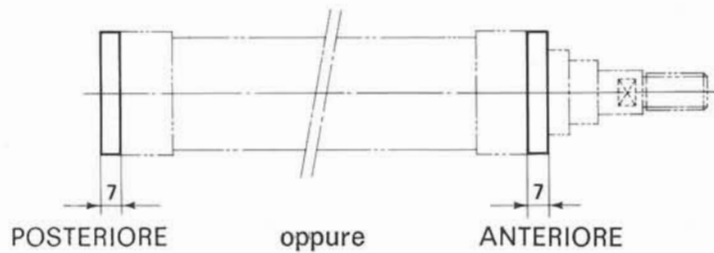
NR 21GF



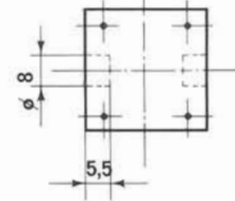
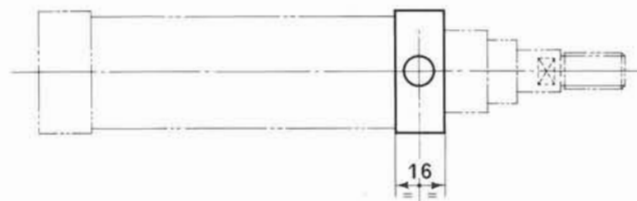
NR 21P



NR 21F



NR 21A



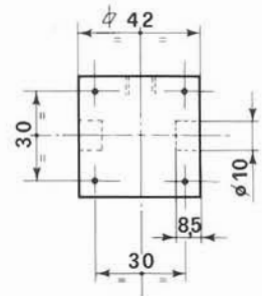
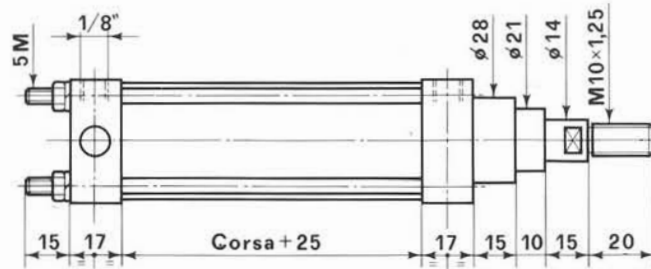
Esempio di ordinazione: NR 21A corsa 100

Diametro pistone	21
Diametro stelo	10
Sezione spinta cm ²	3,4
Sezione trazione cm ²	2,7
Pressione max Kg/cm ²	12

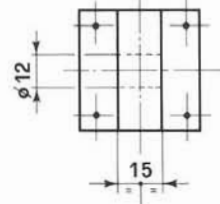
30

TIPO

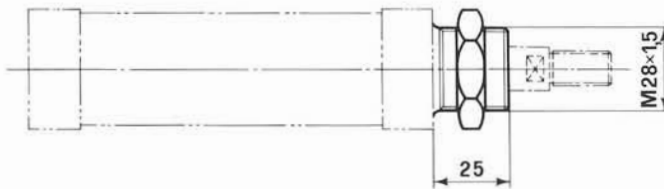
NR 30



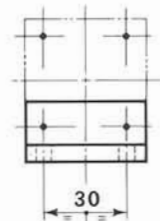
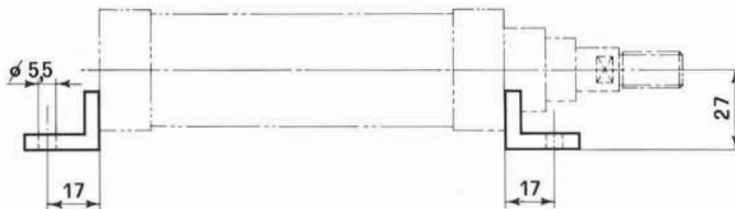
NR 30S



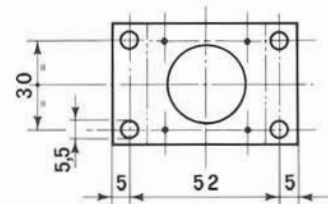
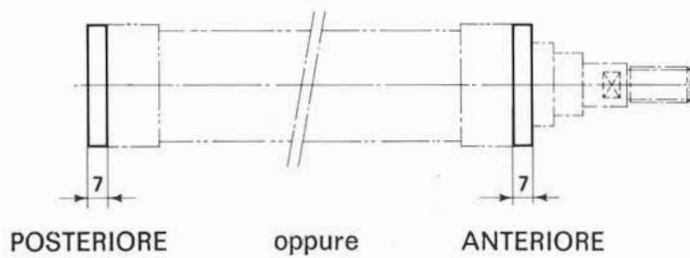
NR30GF



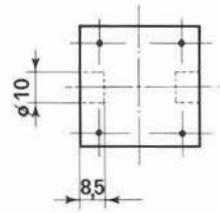
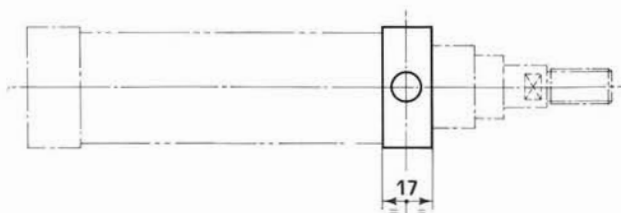
NR 30P



NR 30F



NR 30A



Esempio di ordinazione: NR 30GF corsa 100

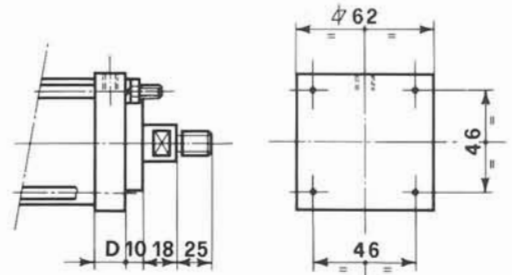
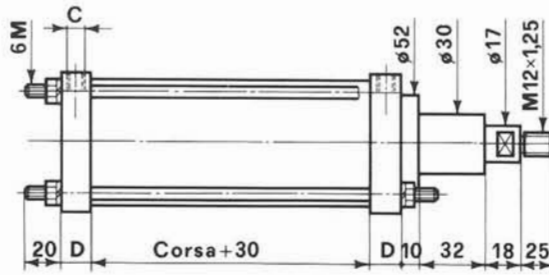
Diametro pistone	30
Diametro stelo	14
Sezione spinta cm ²	7,1
Sezione trazione cm ²	5,6
Pressione max Kg/cm ²	12

TIPO

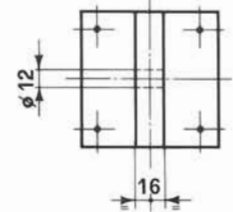
CON GUIDA STELO
TIPO...../A

SENZA GUIDA STELO
TIPO...../B

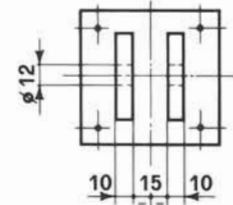
NR 46/...



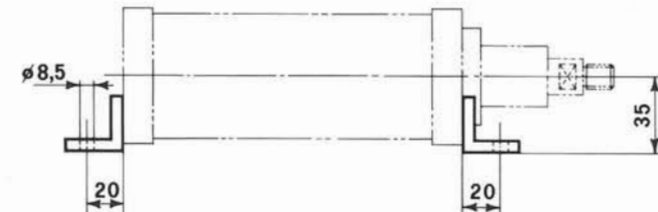
NR 47/...



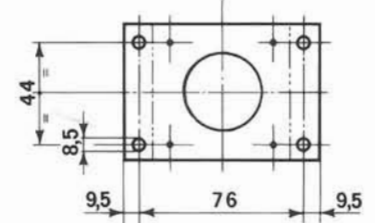
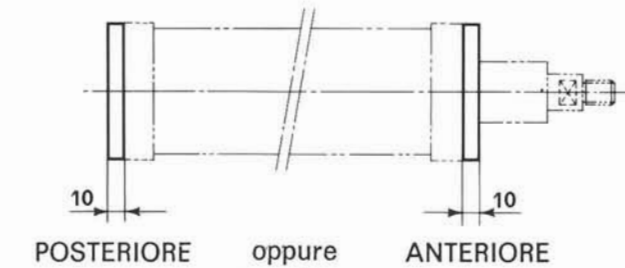
NR47F/...



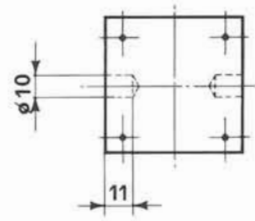
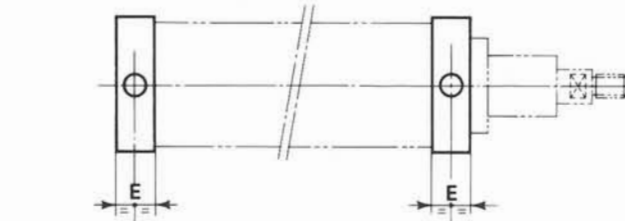
NR 48/...



NR 49/...



NR 50/...



Esempio di ordinazione: NR 46/A 1/4" corsa 100

Diametro pistone	45	Quote	Connessioni: C	
Diametro stelo	17		1/4"	1/2"
Sezione spinta cm ²	15,9	D	19	26
Sezione trazione cm ²	13,6	E	24	26
Pressione max Kg/cm ²	12			

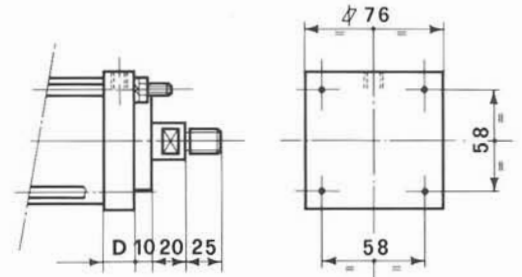
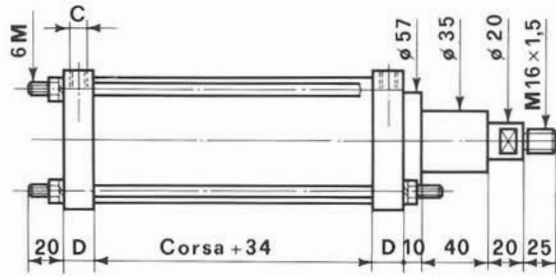
60

TIPO

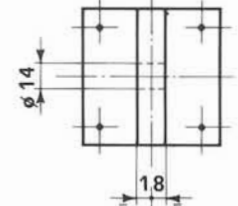
CON GUIDA STELO
TIPO...../A

SENZA GUIDA STELO
TIPO...../B

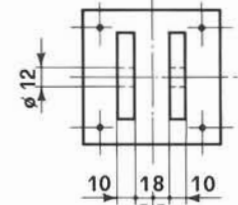
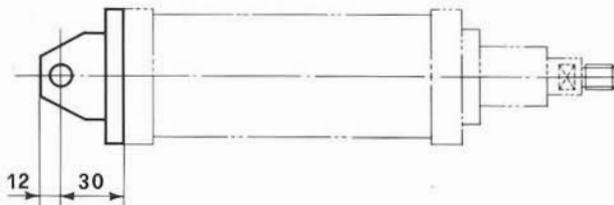
NR 61/...



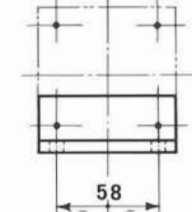
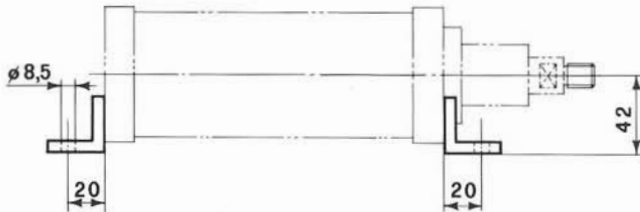
NR 62/...



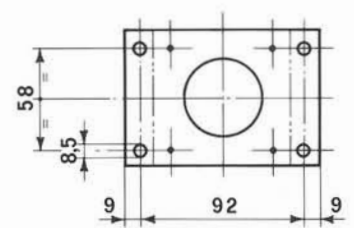
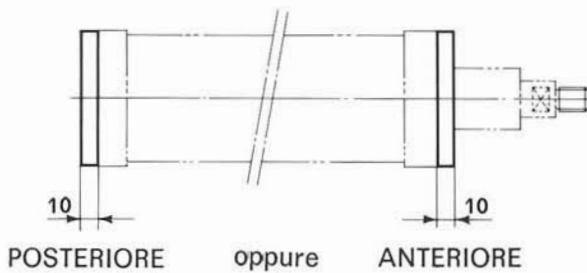
NR 62F/...



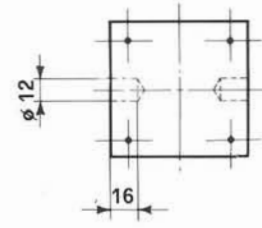
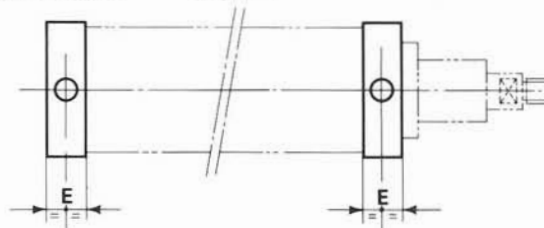
NR 63/...



NR 64/...



NR 65/...



Esempio di ordinazione: NR 62F/B 1/4" corsa 100

Diametro pistone	60	Quote	Conessioni: C	
Diametro stelo	20		1/4"	1/2"
Sezione spinta cm ²	28,3	D	20	26
Sezione trazione cm ²	25,2	E	25	26
Pressione max Kg/cm ²	12			

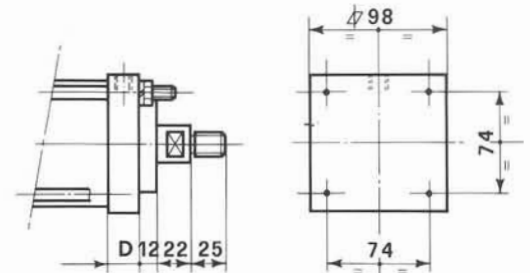
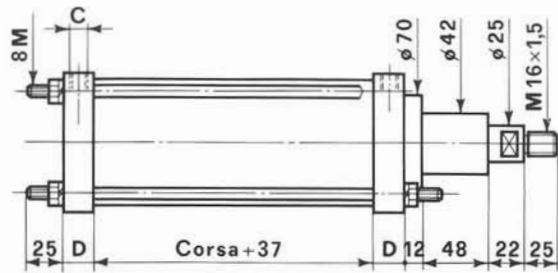
80

TIPO

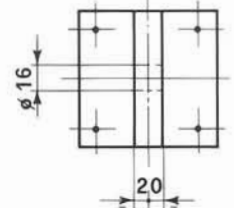
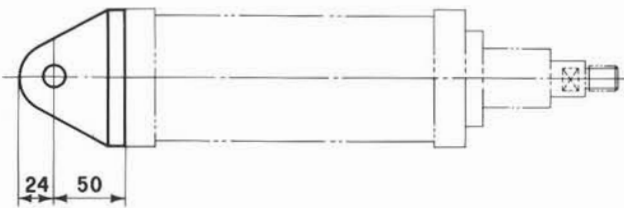
CON GUIDA STELO
TIPO...../A

SENZA GUIDA STELO
TIPO...../B

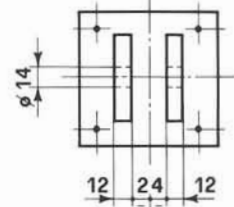
NR 81/...



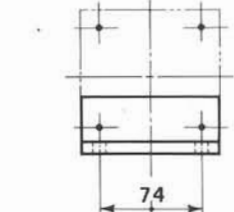
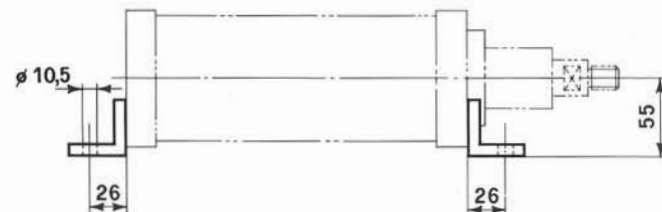
NR 82/...



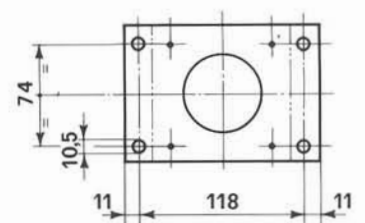
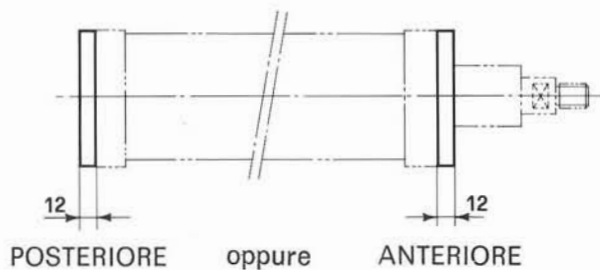
NR82F/...



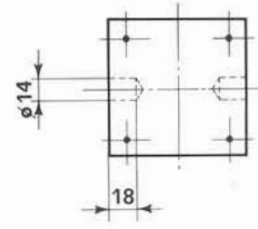
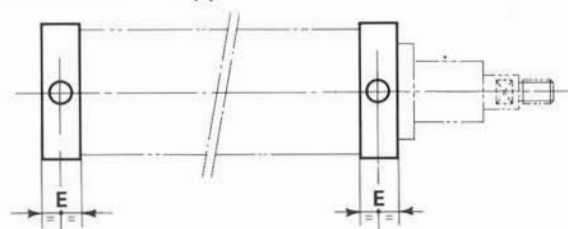
NR 83/...



NR 84/...

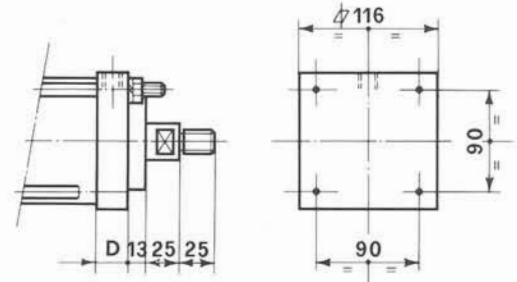
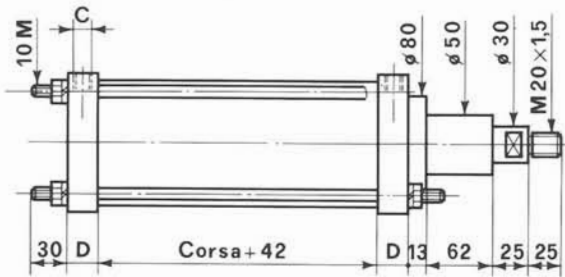
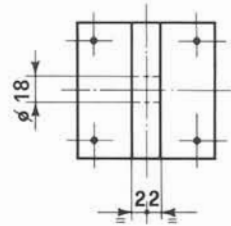
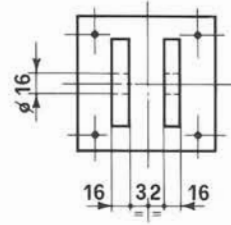
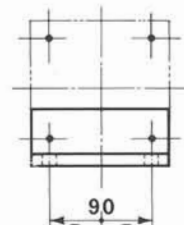
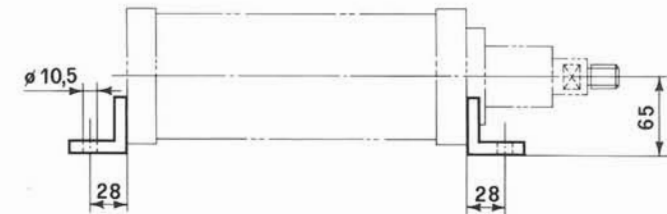
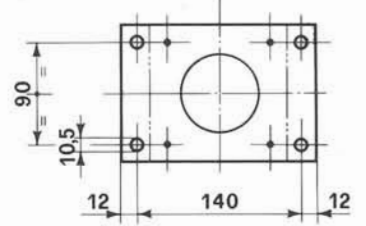
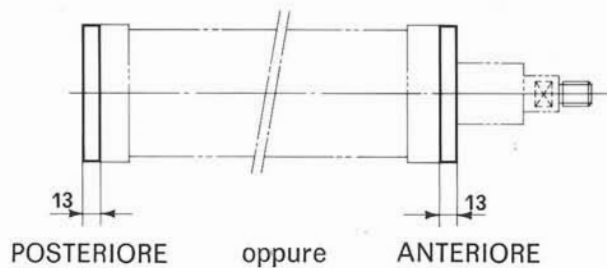
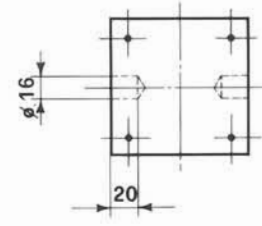
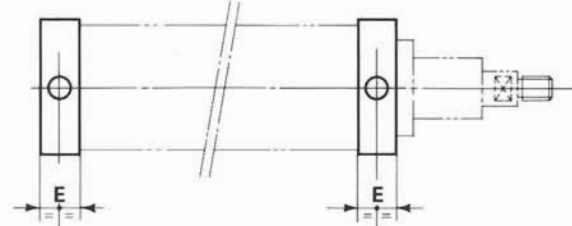


NR 85/...



Esempio di ordinazione: NR 83/A 1/4" corsa 100

Diametro pistone	80	Quote	Connessioni: C	
Diametro stelo	25		1/4"	1/2"
Sezione spinta cm ²	50,3	D	22	26
Sezione trazione cm ²	45,4		E	28
Pressione max Kg/cm ²	12			

TIPO
**CON GUIDA STELO
TIPO...../A**
**SENZA GUIDA STELO
TIPO...../B**
NR 101/...

NR 102/...

NR102F/...

NR 103/...

NR 104/...

NR 105/...

Esempio di ordinazione: NR 101/B 1/2" corsa 100

Diametro pistone	100	Quote	Connessioni: C		
Diametro stelo	30		1/4"	1/2"	3/4"
Sezione spinta cm ²	78,5	D	22	26	35
Sezione trazione cm ²	71,4	E	30	30	35
Pressione max Kg/cm ²	12				

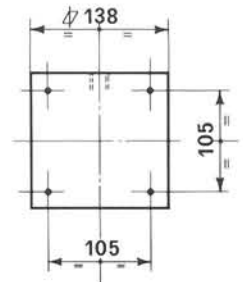
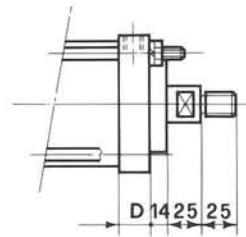
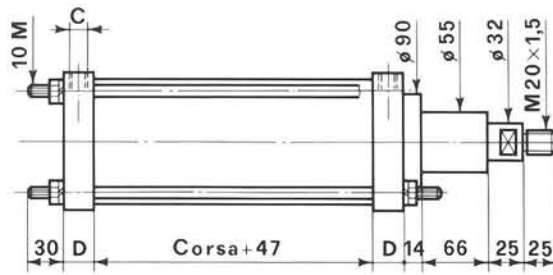
120

TIPO

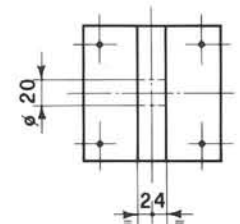
CON GUIDA STELO
TIPO...../A

SENZA GUIDA STELO
TIPO...../B

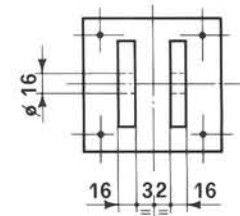
NR 121/...



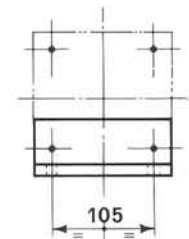
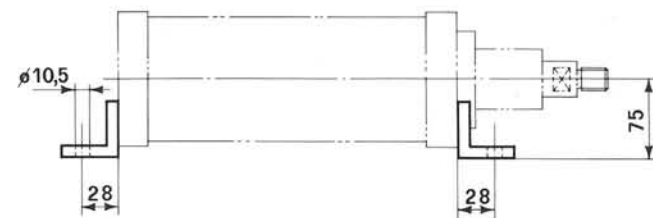
NR 122/...



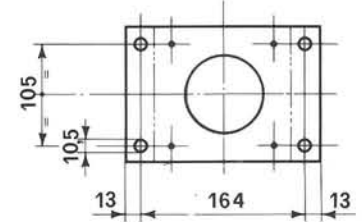
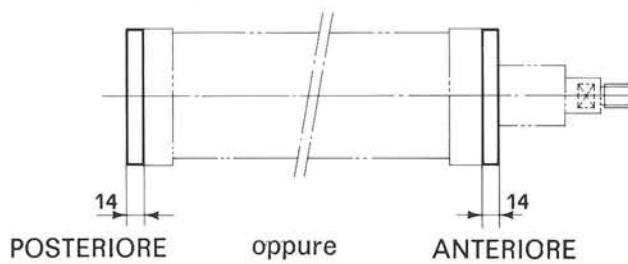
NR 122F/...



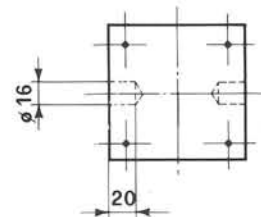
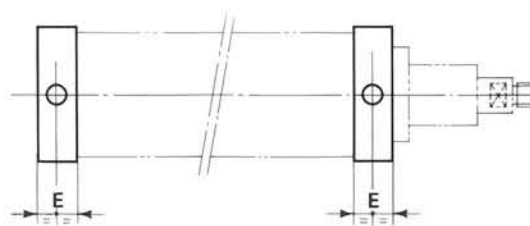
NR 123/...



NR 124/...



NR 125/...



Esempio di ordinazione: NR 124/A post. 1/2" corsa 100

Diametro pistone	120	Quote	Connessioni: C	
Diametro stelo	32		1/2"	3/4"
Sezione spinta cm ²	113,1	D	26	35
Sezione trazione cm ²	105	E	30	35
Pressione max Kg/cm ²	12			

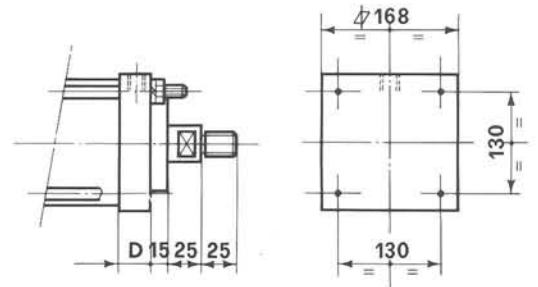
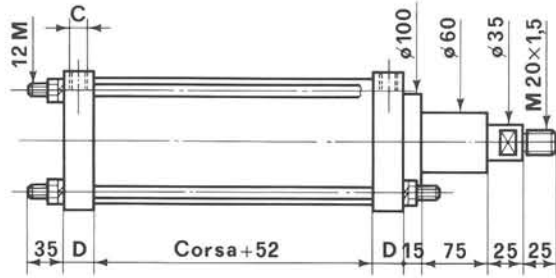
150

TIPO

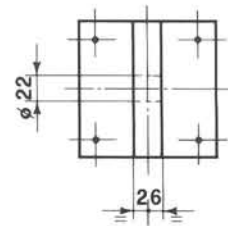
CON GUIDA STELO
TIPO...../A

SENZA GUIDA STELO
TIPO...../B

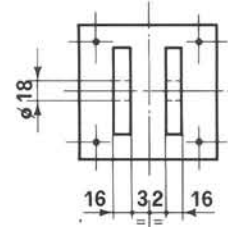
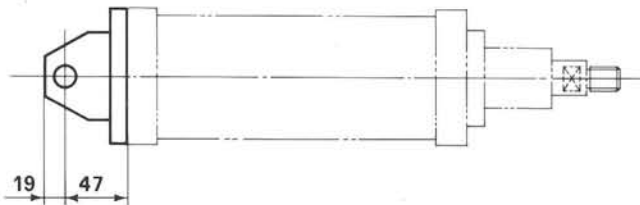
NR 151/...



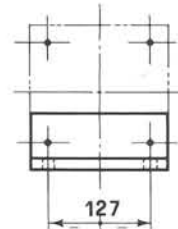
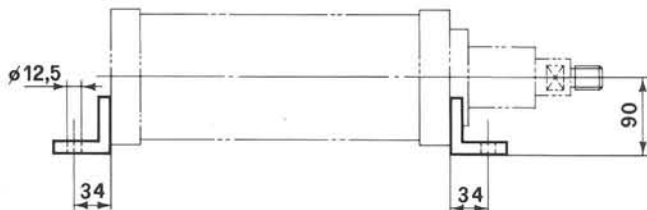
NR152/...



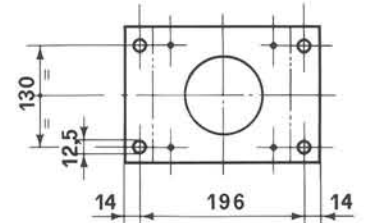
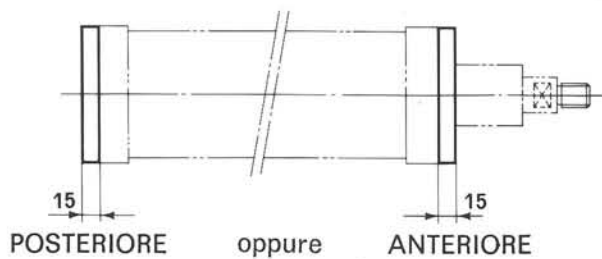
NR152F/...



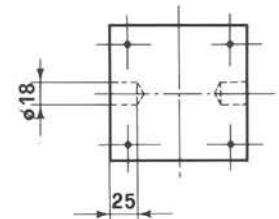
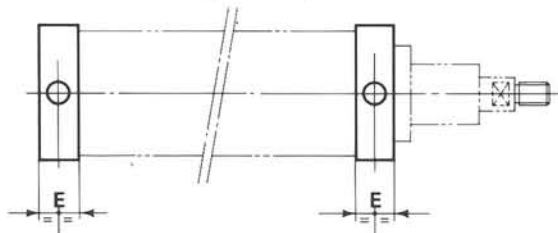
NR153/...



NR154/...



NR155/...



Esempio di ordinazione: NR 155/B anter. 1/2" corsa 100

Diametro pistone	150	Quote	Conessioni: C		
			1/2"	3/4"	1"
Diametro stelo	35	D	26	35	45
Sezione spinta cm ²	176,7				
Sezione trazione cm ²	167,1	E	30	35	45
Pressione max Kg/cm ²	12				

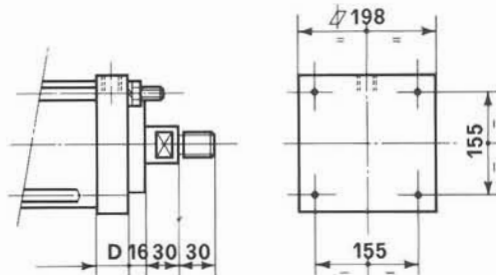
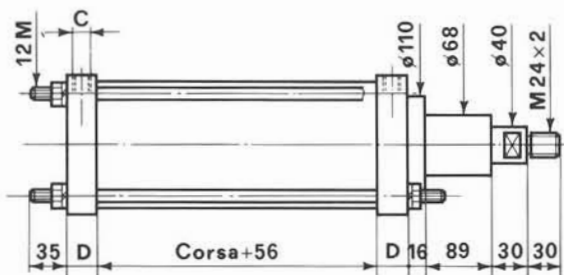
180

TIPO

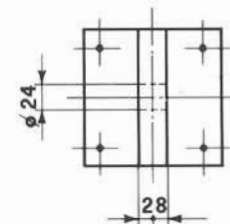
CON GUIDA STELO
TIPO...../A

SENZA GUIDA STELO
TIPO...../B

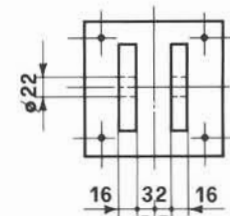
NR 181/...



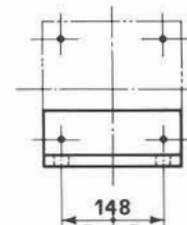
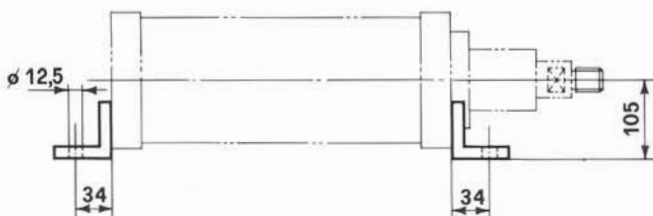
NR 182/...



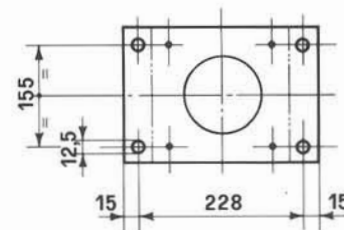
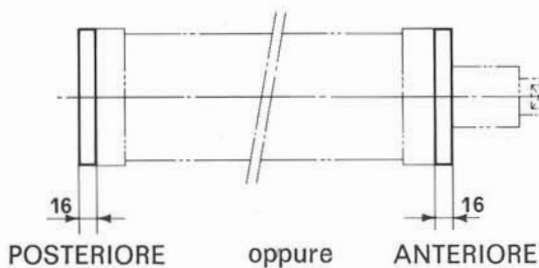
NR 182F/...



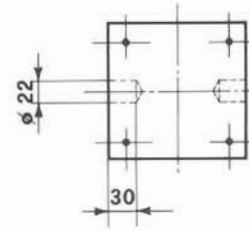
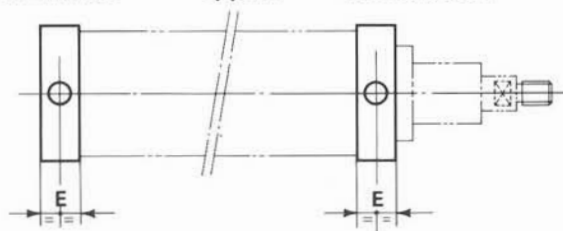
NR 183/...



NR 184/...



NR 185/...



Esempio di ordinazione: **NR 182/A 3/4" corsa 100**

Diametro pistone	180	Quote	Connessioni: C		
Diametro stelo	40		1/2"	3/4"	1"
Sezione spinta cm ²	254,5	D	26	35	45
Sezione trazione cm ²	242		E	35	35
Pressione max Kg/cm ²	12				

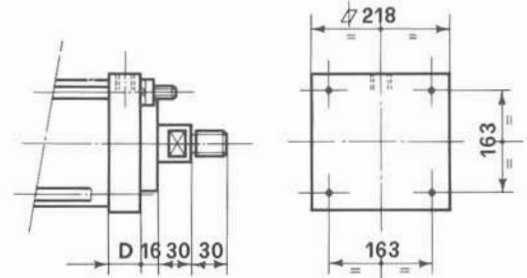
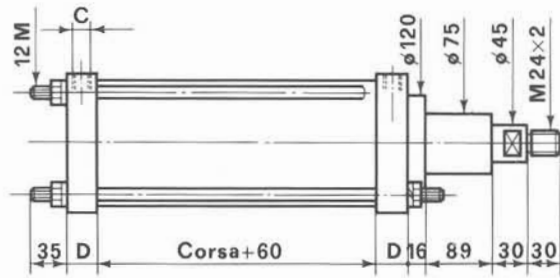
200

TIPO

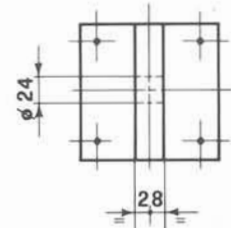
CON GUIDA STELO
TIPO...../A

SENZA GUIDA STELO
TIPO...../B

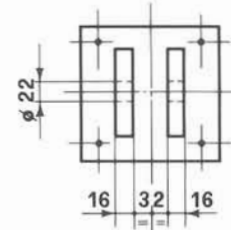
NR201/...



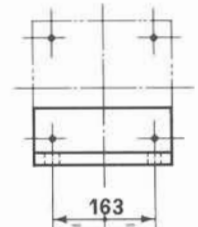
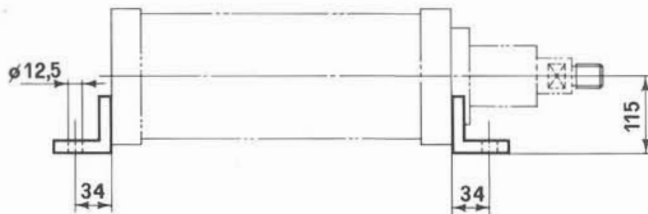
NR202/...



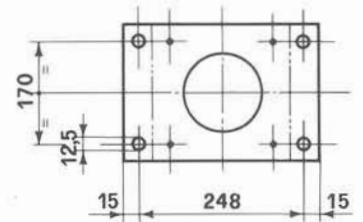
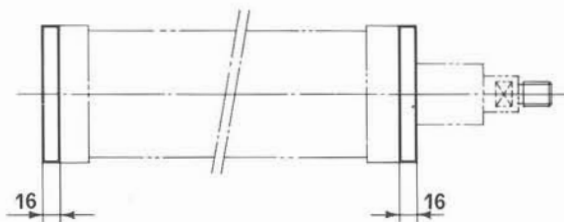
NR202F/...



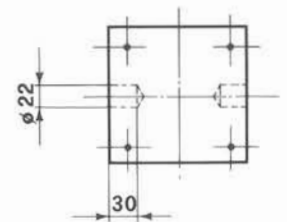
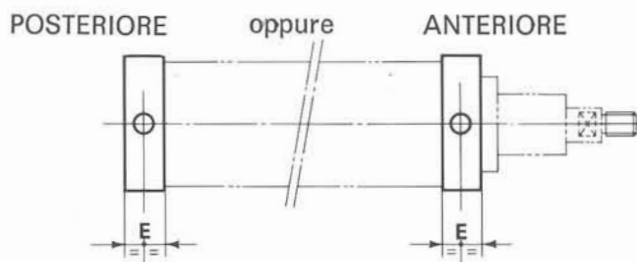
NR203/...



NR204/...



NR205/...



Esempio di ordinazione: NR 203/B 3/4" corsa 100

Diametro pistone	200	Quote	Connessioni: C		
Diametro stelo	45		1/2"	3/4"	1"
Sezione spinta cm ²	314	D	26	35	45
Sezione trazione cm ²	298	E	35	35	45
Pressione max Kg/cm ²	12				

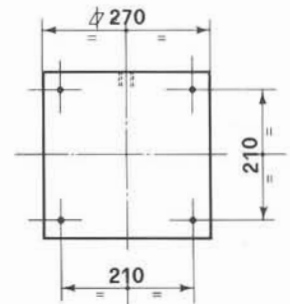
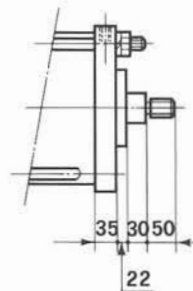
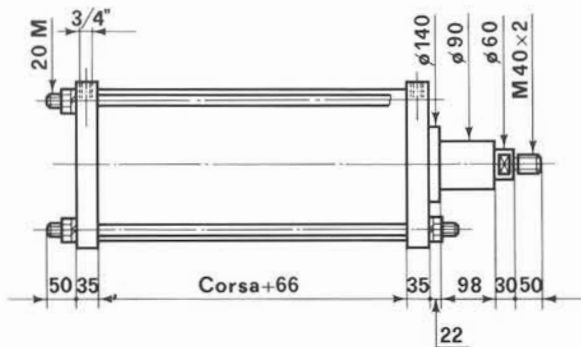
250

TIPO

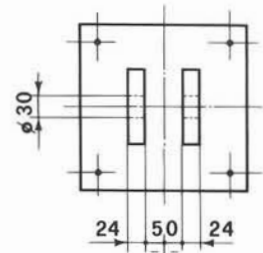
CON GUIDA STELO
TIPO...../A

SENZA GUIDA STELO
TIPO...../B

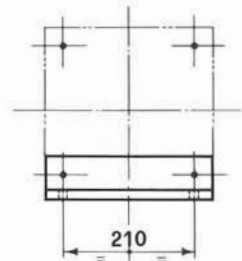
NR 251/...



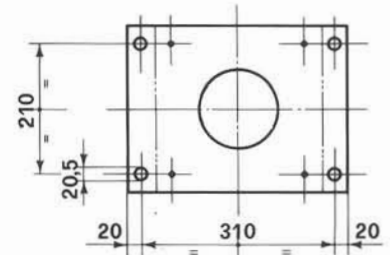
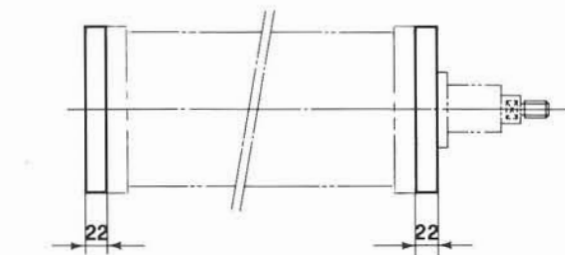
NR 252/...



NR 253/...

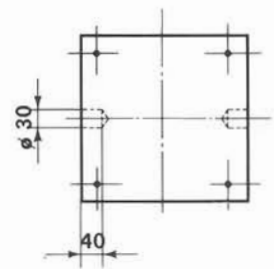
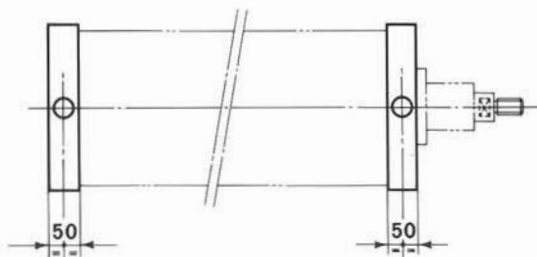


NR 254/...



POSTERIORE oppure ANTERIORE

NR 255/...



Esempio di ordinazione: NR 254/A poster. corsa 100

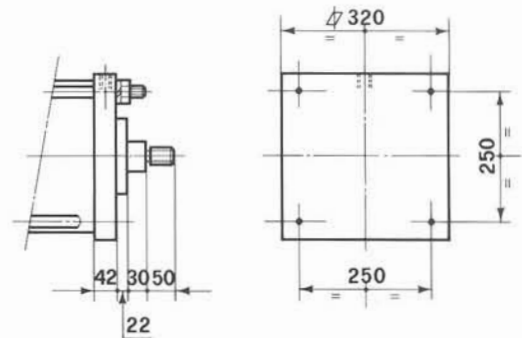
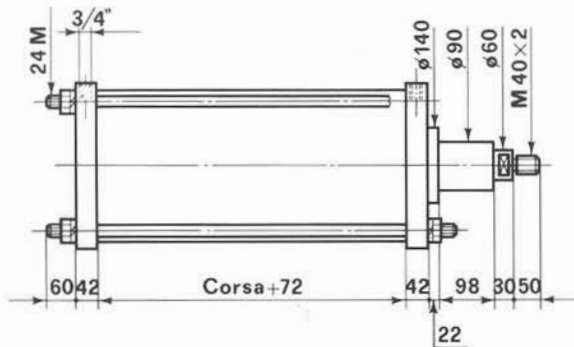
Diametro pistone	250
Diametro stelo	60
Sezione spinta cm ²	490,8
Sezione trazione cm ²	462,5
Pressione max Kg/cm ²	12

TIPO

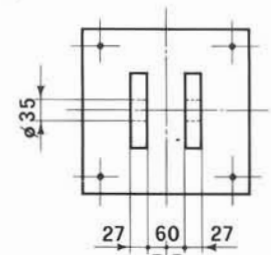
CON GUIDA STELO
TIPO...../A

SENZA GUIDA STELO
TIPO...../B

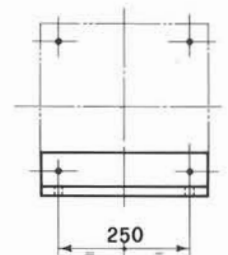
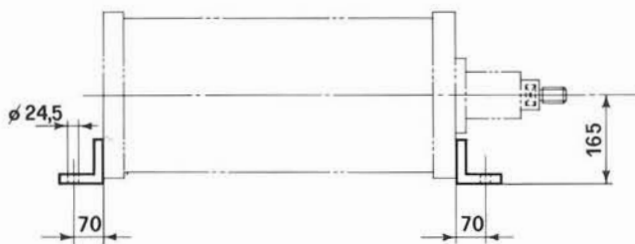
NR 301/...



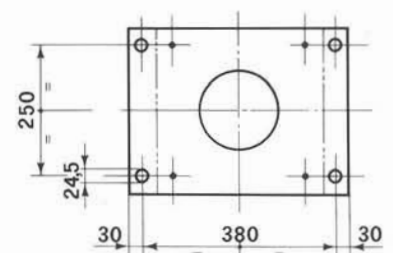
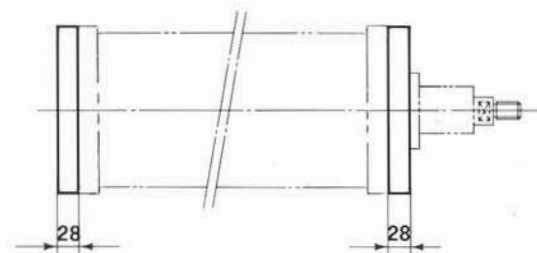
NR 302/...



NR 303/...

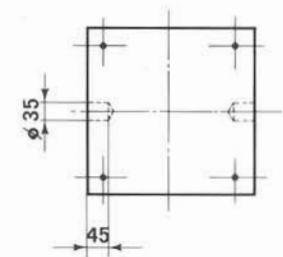
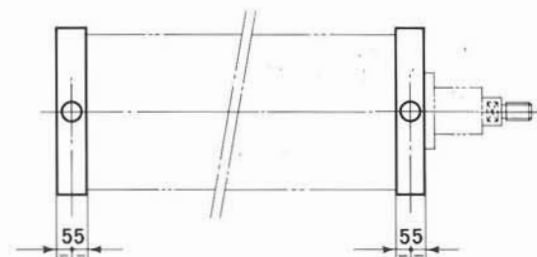


NR 304/...



POSTERIORE oppure ANTERIORE

NR 305/...



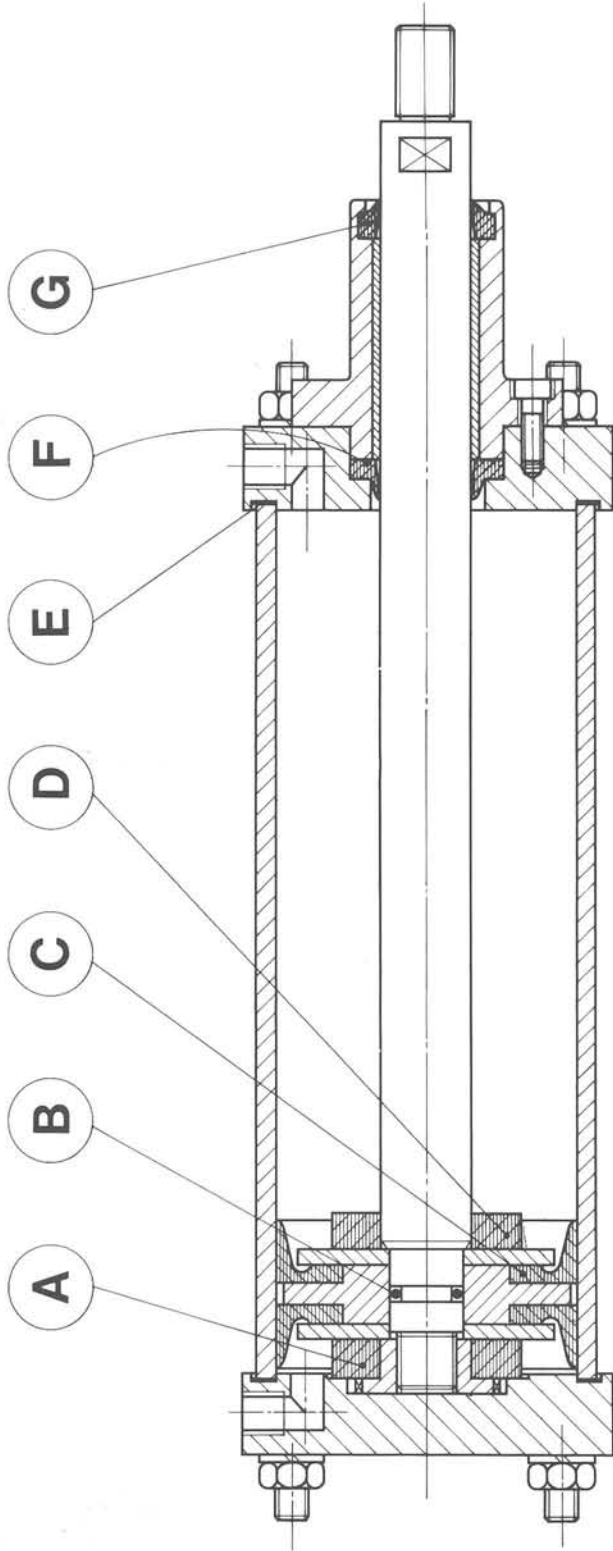
Esempio di ordinazione: NR 301/B corsa 100

Diametro pistone	300
Diametro stelo	60
Sezione spinta cm ²	706,8
Sezione trazione cm ²	678,5
Pressione max Kg/cm ²	12



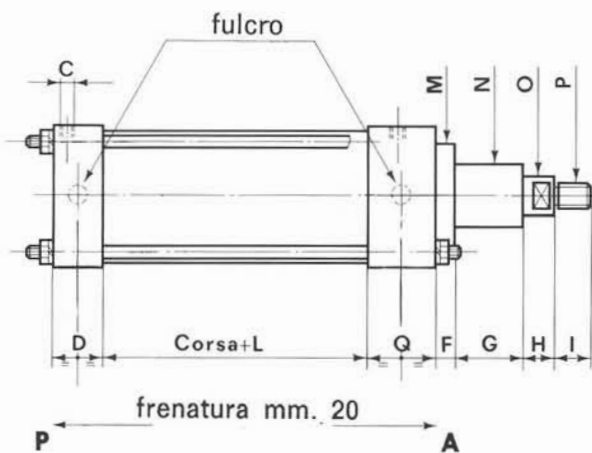
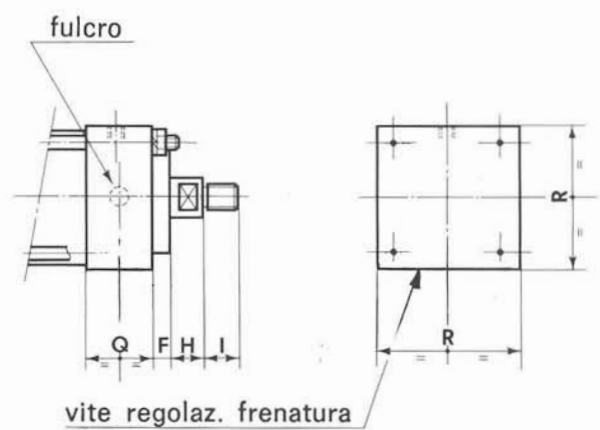
CILINDRI PNEUMATICI A DOPPIO EFFETTO

SERIE **NR**



D I A M E T R I

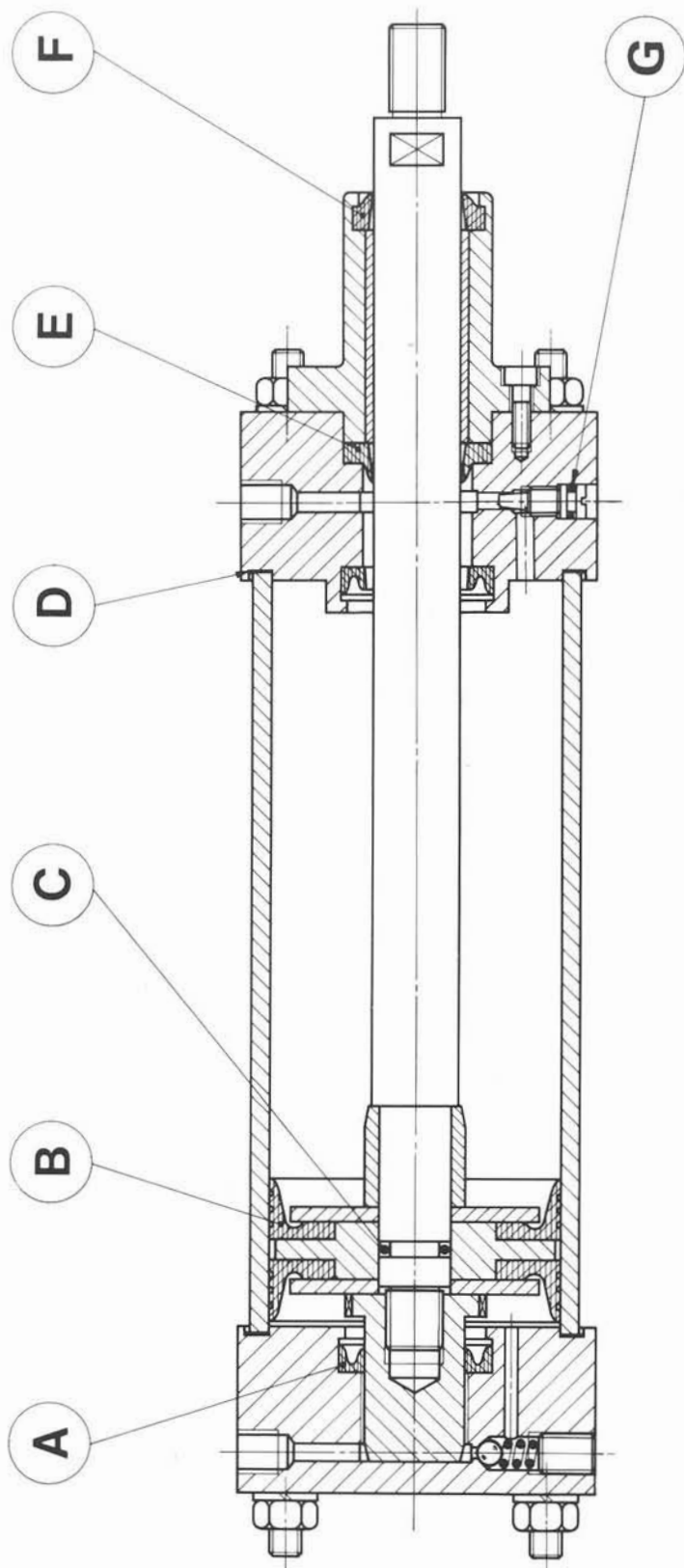
PARTIC.	D I A M E T R I													
	21	30	45	60	80	100	120	150	180	200	250	300		
A	—	—	45/P	60/P	80/P	100/P	120/P	150/P	180/P	200/P	—	—		
B	—	—	OR-2037	OR-2050	OR-3062	OR-3068	OR-3081	OR-3100	OR-3118	OR-3118	OR-4137	OR-4137	OR-4137	OR-4137
C	21/2	30/2	45/2	60/2	80/2	100/2	120/2	150/2	180/2	200/2	UM-250210	UM-300260	UM-300260	UM-300260
D	—	—	45/A	60/A	80/A	100/A	120/A	150/A	180/A	200/A	—	—		
E	21/T	30/T	45/T	60/T	80/T	100/T	120/T	150/T	180/T	200/T	250/T	300/T	300/T	300/T
F	21/1	30/1	45/1	60/1	80/1	100/1	120/1	150/1	180/1	200/1	UM-8060	UM-8060	UM-8060	UM-8060
G	RS-10	RS-14	RS-17	RS-20	RS-25	RS-30	RS-32	RS-35	RS-40	RS-45	RS-60	RS-60	RS-60	RS-60

**CON GUIDA STELO
TIPO...../A**

**SENZA GUIDA STELO
TIPO...../B**

DIMENSIONI

Ø	DIMENSIONI												
	C	D	Q	F	G	H	I	L	M	N	O	P	R
30	1/8"	40	40	15	10	15	20	25	28	21	14	10x1,25	50
45	1/4"	41	53	10	32	18	25	30	52	30	17	12x1,25	62
	1/2"												
60	1/4"	42	54	10	40	20	25	34	57	35	20	16x1,5	76
	1/2"												
80	1/4"	44	56	12	48	22	25	37	70	42	25	16x1,5	98
	1/2"												
100	1/4"	45	56	13	62	25	25	42	80	50	30	20x1,5	116
	1/2"												
	3/4"												
120	1/2"	45	56	14	66	25	25	47	90	55	32	20x1,5	138
	3/4"												
150	1/2"	48	60	15	75	25	25	52	100	60	35	20x1,5	168
	3/4"												
	1"												
180	1/2"	53	67	16	89	30	30	56	110	68	40	24x2	198
	3/4"												
	1"												
200	1/2"	53	67	16	89	30	30	60	120	75	45	24x2	218
	3/4"												
	1"												

PER GLI ATTACCHI E LE QUOTE MANCANTI RIFERIRSI AI CILINDRI SERIE NR

Esempio ordinazione di un cilindro Ø 120 connessioni 1/2" Gas, con guida stelo, attacco a piedini, corsa totale mm. 100, frenato anteriore, e posteriore (FT/AP - 123/A - 1/2" - c. 100)

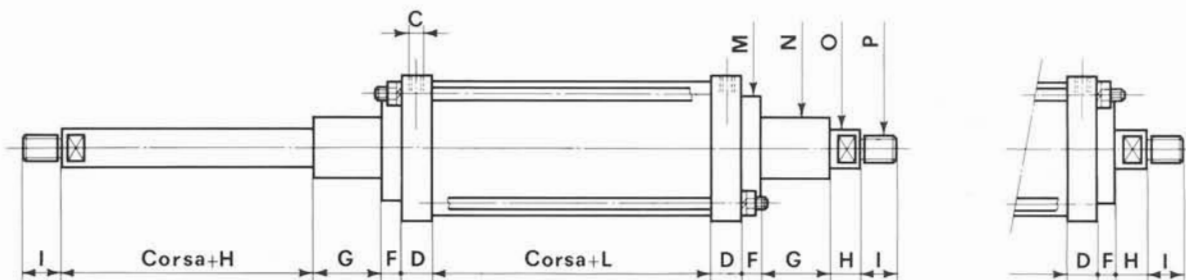


D I A M E T R I

PARTIC.	D I A M E T R I									
	30	45	60	80	100	120	150	180	200	
A	OR-121	DI-087	DI-100	DI-118	DI-162	DI-162	DI-162	DI-193	DI-225	
B	30/2	45/2	60/2	80/2	100/2	120/2	150/2	180/2	200/2	
C	—	OR-2037	OR-2050	OR-3062	OR-3068	OR-3081	OR-3100	OR-3118	OR-3118	
D	30/T	45/T	60/T	80/T	100/T	120/T	150/T	180/T	200/T	
E	30/1	45/1	60/1	80/1	100/1	120/1	150/1	180/1	200/1	
F	RS-14	RS-17	RS-20	RS-25	RS-30	RS-32	RS-35	RS-40	RS-45	
G	OR-2010	OR-2010	OR-2021	OR-2021	OR-2021	OR-2050	OR-2050	OR-2050	OR-2050	OR-2050

CON GUIDA STELO
TIPO...../A

SENZA GUIDA STELO
TIPO...../B



Ø	DIMENSIONI										
	C	D	F	G	H	I	L	M	N	O	P
21	1/8"	16	12	7	10	15	22	22	17	10	8x1,25
30	1/8"	17	15	10	15	20	25	28	21	14	10x1,25
45	1/4"	19	10	32	18	25	30	52	30	17	12x1,25
	1/2"	26									
60	1/4"	20	10	40	20	25	34	57	35	20	16x1,5
	1/2"	26									
80	1/4"	22	12	48	22	25	37	70	42	25	16x1,5
	1/2"	26									
100	1/4"	22	13	62	25	25	42	80	50	30	20x1,5
	1/2"	26									
	3/4"	35									
120	1/2"	26	14	66	25	25	47	90	55	32	20x1,5
	3/4"	35									
150	1/2"	26	15	75	25	25	52	100	60	35	20x1,5
	3/4"	35									
	1"	45									
180	1/2"	26	16	89	30	30	56	110	68	40	24x2
	3/4"	35									
	1"	45									
200	1/2"	26	16	89	30	30	60	120	75	45	24x2
	3/4"	35									
	1"	45									
250	3/4"	35	22	98	30	50	66	140	90	60	40x2
300	3/4"	42	22	98	30	50	72	140	90	60	40x2

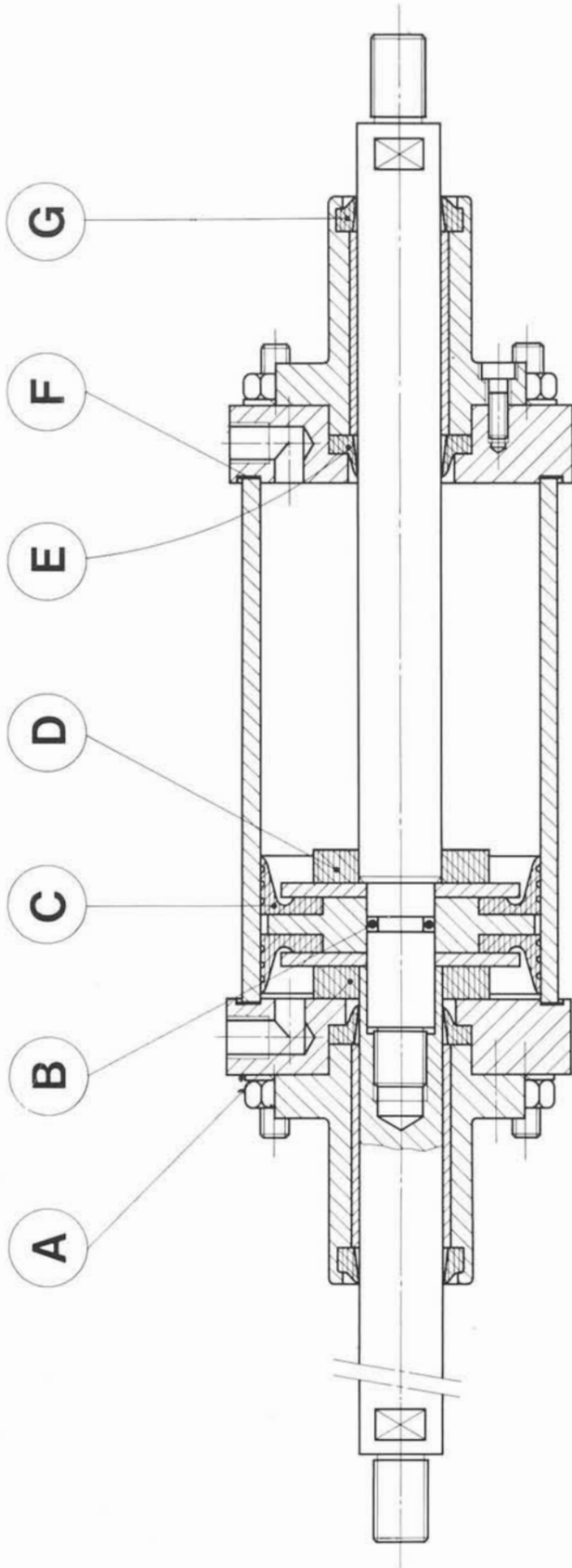
PER GLI ATTACCHI E LE QUOTE MANCANTI RIFERIRSI AI CILINDRI SERIE NR

Esempio ordinazione di un cilindro Ø 100, connessioni 3/4" Gas, con guida stelo, attacco a flangia anteriore, corsa mm. 100: (SU 104/A anteriore - 3/4" - c. 100)



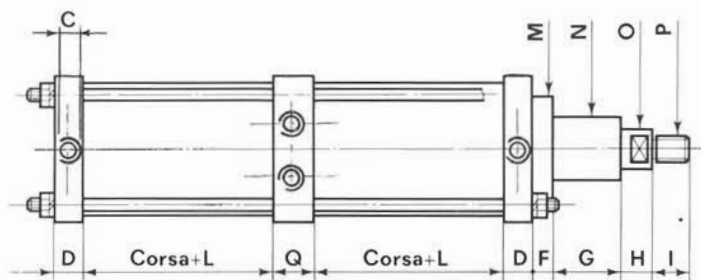
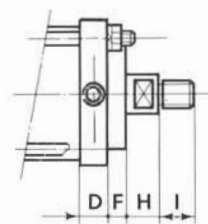
CILINDRI PNEUMATICI CON STELO USCENTE ENTRAMBI LE PARTI

SERIE SU



D I A M E T R I

PARTIC.	D I A M E T R I													
	21	30	45	60	80	100	120	150	180	200	250	300		
A	—	—	45/P	60/P	80/P	100/P	120/P	150/P	180/P	200/P	—	—		
B	—	—	OR-2037	OR-2050	OR-3062	OR-3068	OR-3081	OR-3100	OR-3118	OR-3118	OR-4137	OR-4137	OR-4137	OR-4137
C	21/2	30/2	45/2	60/2	80/2	100/2	120/2	150/2	180/2	200/2	UM-250210	UM-300260	UM-300260	UM-300260
D	—	—	45/A	60/A	80/A	100/A	120/A	150/A	180/A	200/A	—	—		
E	21/1	30/1	45/1	60/1	80/1	100/1	120/1	150/1	180/1	200/1	UM-8060	UM-8060	UM-8060	UM-8060
F	21/T	30/T	45/T	60/T	80/T	100/T	120/T	150/T	180/T	200/T	250/T	300/T	300/T	300/T
G	RS-10	RS-14	RS-17	RS-20	RS-25	RS-30	RS-32	RS-35	RS-40	RS-45	RS-60	RS-60	RS-60	RS-60

CON GUIDA STELO
TIPO...../A

SENZA GUIDA STELO
TIPO...../B


Ø	DIMENSIONI											
	C	D	Q	F	G	H	I	L	M	N	O	P
30	1/8"	17	22	15	10	15	20	25	28	21	14	10x1,25
45	1/4"	19	22	10	32	18	25	30	52	30	17	12x1,25
	1/2"	26	30									
60	1/4"	20	23	10	40	20	25	34	57	35	20	16x1,5
	1/2"	26	30									
80	1/4"	22	26	12	48	22	25	37	70	42	25	16x1,5
	1/2"	26	30									
100	1/4"	22	26	13	62	25	25	42	80	50	30	20x1,5
	1/2"	26	30									
	3/4"	35	38									
120	1/2"	26	30	14	66	25	25	47	90	55	32	20x1,5
	3/4"	35	38									
150	1/2"	26	30	15	75	25	25	52	100	60	35	20x1,5
	3/4"	35	38									
	1"	45	45									
180	1/2"	26	30	16	89	30	30	56	110	68	40	24x2
	3/4"	35	38									
	1"	45	45									
200	1/2"	26	30	16	89	30	30	60	120	75	45	24x2
	3/4"	35	38									
	1"	45	45									
250	3/4"	35	50	22	98	30	50	66	140	90	60	40x2
300	3/4"	42	50	22	98	30	50	72	140	90	60	40x2

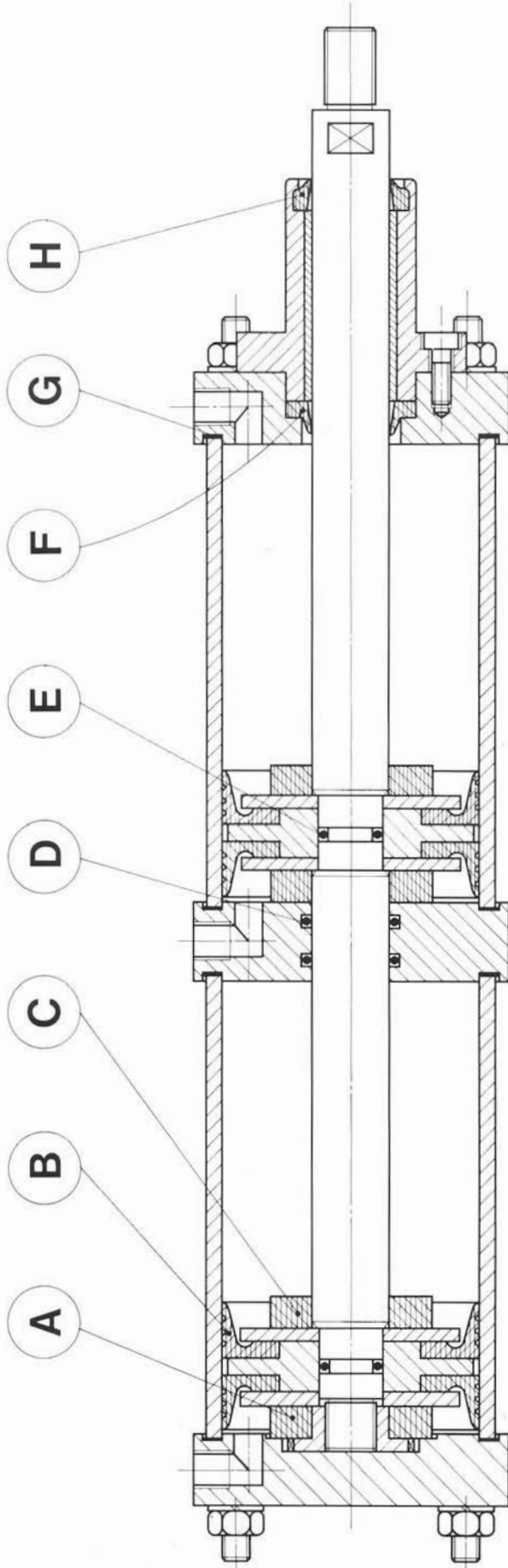
PER GLI ATTACCHI E LE QUOTE MANGANTI RIFERIRSI AI CILINDRI SERIE NR

 Esempio ordinazione di un cilindro Ø 100, connessioni 3/4" Gas, senza guida steelo, attacco a piedini corsa mm. 100: **(TD 103/B - 3/4" - c. 100)**

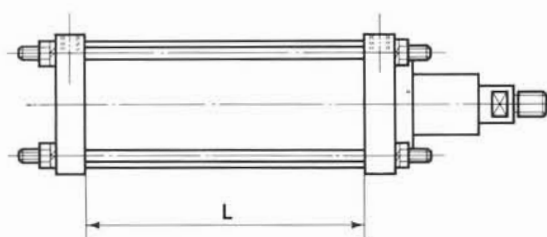
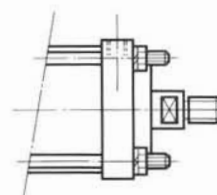


CILINDRI PNEUMATICI IN TANDEM

SERIE **TD**



PARTIC.	D I A M E T R I										
	30	45	60	80	100	120	150	180	200	250	300
A	—	45/P	60/P	80/P	100/P	120/P	150/P	180/P	200/P	—	—
B	30/2	45/2	60/2	80/2	100/2	120/2	150/2	180/2	200/2	UM-250210	UM-300260
C	—	45/A	60/A	80/A	100/A	120/A	150/A	180/A	200/A	—	—
D	OR-118	OR-3068	OR-4081	OR-4100	OR-4118	OR-4125	OR-4137	OR-144	OR-149	UM-8060	UM-8060
E	—	OR-2037	OR-2050	OR-3062	OR-3068	OR-3081	OR-3100	OR-3118	OR-3118	OR-4137	OR-4137
F	30/1	45/1	60/1	80/1	100/1	120/1	150/1	180/1	200/1	UM-8060	UM-8060
G	30/T	45/T	60/T	80/T	100/T	120/T	150/T	180/T	200/T	250/T	300/T
H	RS-14	RS-17	RS-20	RS-25	RS-30	RS-32	RS-35	RS-40	RS-45	RS-60	RS-60

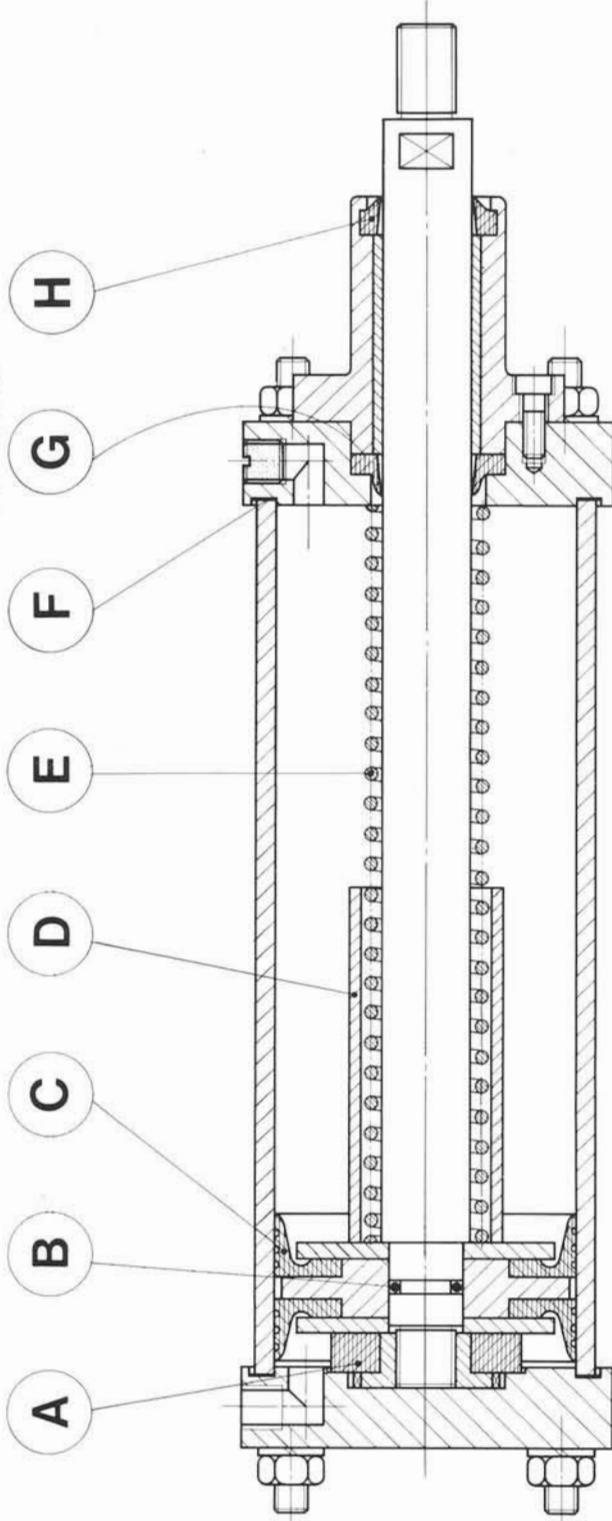
**CON GUIDA STELO
TIPO...../A**

**SENZA GUIDA STELO
TIPO...../B**


Ø	Kg. Molle		QUOTA L PER CORSA:								
	min.	max.	10	20	30	40	50	60	70	80	100
21	1,5	4,9	44	64	85	105	126	146	167	187	228
30	3,5	9,6	48	68	88	109	129	149	170	190	231
45	7	21	48	69	91	113	135	156	177	198	242
60	9	31	52	74	95	116	137	158	178	200	242
80	14	40	55	77	98	120	141	162	184	206	249
100	18	49	58	78	98	118	137	157	177	197	236
120	20	65	63	83	103	123	144	165	185	205	247
150	27	82	67,5	88,5	108,5	129,5	150,5	171,5	191,5	212,5	253,5
180	37	97	72,5	92,5	112,5	133,5	153,5	174,5	194,5	214,5	255,5
200	48	112	76,5	97,5	117,5	138,5	158,5	179,5	199,5	220,5	262,5

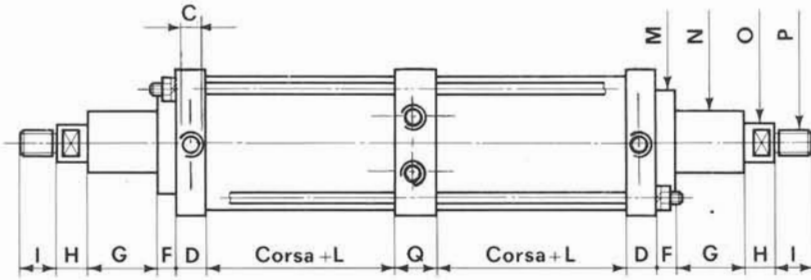
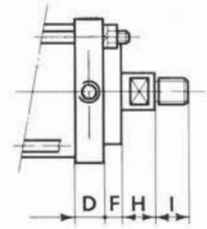
PER GLI ATTACCHI E LE QUOTE MANGANTI RIFERIRSI AI CILINDRI SERIE NR

Esempio ordinazione di un cilindro Ø 60, connessioni 1/4" Gas, con guida steelo, attacco a piedini, corsa mm. 100: (RM 63/A - 1/4" - c. 100)

A RICHIESTA

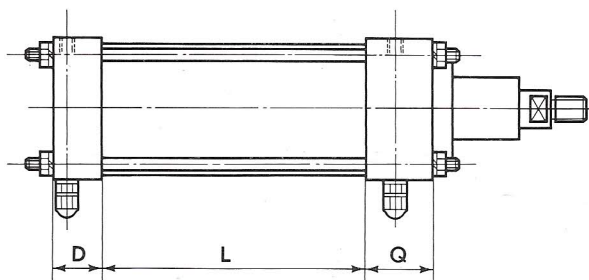


PARTIC.	D I A M E T R I									
	21	30	45	60	80	100	120	150	180	200
A	—	—	45/P	60/P	80/P	100/P	120/P	150/P	180/P	200/P
B	—	—	OR-2037	OR-2050	OR-3062	OR-3068	OR-3081	OR-3100	OR-3118	OR-3118
C	21/2	30/2	45/2	60/2	80/2	100/2	120/2	150/2	180/2	200/2
D	21/D	30/D	45/D	60/D	80/D	100/D	120/D	150/D	180/D	200/D
E	21/M	30/M	45/M	60/M	80/M	100/M	120/M	150/M	180/M	200/M
F	21/T	30/T	45/T	60/T	80/T	100/T	120/T	150/T	180/T	200/T
G	21/1	30/1	45/1	60/1	80/1	100/1	120/1	150/1	180/1	200/1
H	RS-10	RS-14	RS-17	RS-20	RS-25	RS-30	RS-32	RS-35	RS-40	RS-45

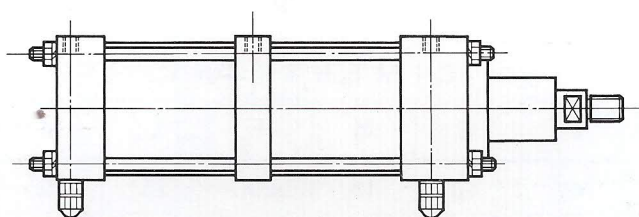
**CON GUIDA STELO
TIPO...../A**

**SENZA GUIDA STELO
TIPO...../B**


Ø	DIMENSIONI												PER GLI ATTACCHI E LE QUOTE MANCANTI RIFERIRSI AI CILINDRI SERIE NR
	C	D	Q	F	G	H	I	L	M	N	O	P	
30	1/8"	17	22	15	10	15	20	25	28	21	14	10x1,25	
45	1/4"	19	22	10	32	18	25	30	52	30	17	12x1,25	
	1/2"	26	30										
60	1/4"	20	23	10	40	20	25	34	57	35	20	16x1,5	
	1/2"	26	30										
80	1/4"	22	26	12	48	22	25	37	70	42	25	16x1,5	
	1/2"	26	30										
100	1/4"	22	26	13	62	25	25	42	80	50	30	20x1,5	
	1/2"	26	30										
	3/4"	35	38										
120	1/2"	26	30	14	66	25	25	47	90	55	32	20x1,5	
	3/4"	35	38										
150	1/2"	26	30	15	75	25	25	52	100	60	35	20x1,5	
	3/4"	35	38										
	1"	45	45										
180	1/2"	26	30	16	89	30	30	56	110	68	40	24x2	
	3/4"	35	38										
	1"	45	45										
200	1/2"	26	30	16	89	30	30	60	120	75	45	24x2	
	3/4"	35	38										
	1"	45	45										
250	3/4"	35	38	22	98	30	50	66	140	90	60	40x2	
300	3/4"	42	48	22	98	30	50	72	140	90	60	40x2	

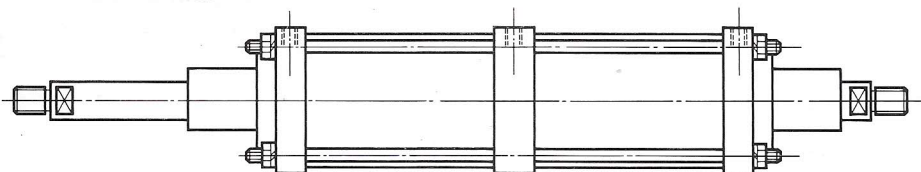
Esempio ordinazione di un cilindro Ø 100, connessioni 3/4" Gas, senza guida stelo, attacco a piedini, corsa mm. 100 e corsa mm. 50 (DC 103/B - 3/4" c. 100/50)



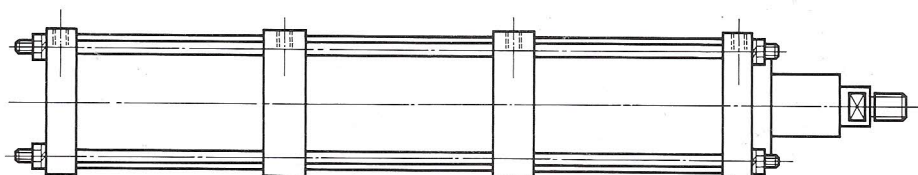
Tutti i cilindri serie **FT** hanno una frenatura di mm. 20. Per corse frenate superiori aggiungere alla quota **L** la maggiorazione di frenatura



I cilindri in tandem possono anche essere frenati da uno o due lati (testate esterne)



I cilindri in tandem possono anche avere lo stelo uscente da ambo i lati



I cilindri in tandem possono essere costruiti a 3 stadi